



SCANDINAVIAN  
ENERGY CONTRACTOR

# Building a better future

"Our mission is to be a leader in the field of designing, building,  
and operating sustainable energy and resource recovery solutions."







## Welcome to SEC!

With this brochure we hope to give you a good impression of who we are and what we do. Feel free to contact us if you need to know more about our skills and how we can assist your company. On the back you will find our contact details.

We hope you will enjoy getting to know us.

03

WHO  
WE ARE

04

WHAT  
WE DO

06

WHAT WE  
DELIVER

08

OPERATIONS &  
MAINTENANCE

12

OUR  
PROJECTS

14

JOIN  
OUR TEAM

15

SUSTAINABILITY

16

CONTACT US



## Who we are

"Our purpose is to build a better future for the benefit of the local community by supporting sustainable development locally as well as globally."

Scandinavian Energy Contractor A/S (SEC) builds and operates sustainable energy and resource recovery solutions using the most modern methods and state-of-the-art technologies.

Originating from one of the world's largest power plant contractors, Burmeister & Wain Scandinavian Contractor A/S (BWSC), we have an exceptionally experienced and competent staff of specialists. We develop, engineer, and design, we handle project management and subcontractors, and we take care of the future operation of the completed energy facilities.

More than 70 employees with invaluable expertise form the backbone of our business, as we aim to become the preferred supplier of sustainable energy and resource recovery solutions worldwide.

Scandinavian Energy Contractor operates in a market-oriented way based on an in-depth understanding of the energy industry. Our project management, organisation, and team spirit place us in the vanguard of construction contractors for sustainable energy facilities.

Our most valued asset is the dedication of our employees, their flexibility, and their innovative approach to delivering the most reliable and sustainable energy and resource recovery facilities of the future.

Together, our employees have built power plants with a capacity of until now more than 4,000 MW in 74 countries.







## What we do

"Creating value for our customers is a key goal for SEC – we do so by empowering and trusting each other, taking responsibility, and building credibility."

Scandinavian Energy Contractor was established on a desire to build a better future that is both beneficial for the local community and a support for sustainable development locally as well as globally.

Our principal mission is to be at the forefront and lead the market towards designing, building, and operating sustainable energy solutions.

As a sustainable energy and resource recovery solutions provider, Scandinavian Energy Contractor provides a full-service solution. We specify objectives and requirements, we design both appearance and function, and we provide the right team and specialists to make the plans a reality.

## We value:



**EMPOWERMENT**, which at SEC entails open communication and a culture of feedback with both suppliers, the customer, and ourselves. This allows us to ensure transparency and hold each other accountable. We drive our business forward together by exploring, improving, and implementing our solutions across functions.



**OUR BUSINESS**, which means that we create value for SEC and our customers by developing sustainable solutions at the same time caring for the environment and society. This way we build credibility.



**CREDIBILITY**, because we act with integrity, follow through on commitments and trust each other.



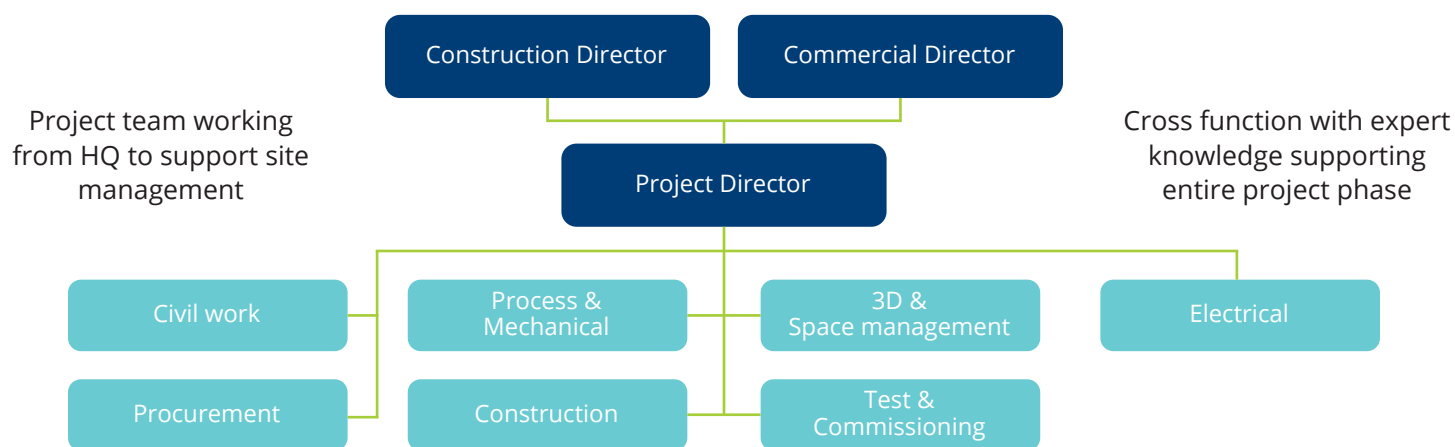
**EACH OTHER**, because our solutions are based on respect, openness, and curiosity, which in turn develop and empower each employee's individual potential.







## Strong execution team enables collaboration across functions



Opmatic are specialists in automation, industrial installation, panel production and fire protection, and provide competent solutions and ideas of all sizes.

We have more than **20 years of experience** in technical solutions for manufacturing, machinery, power plants,

infrastructure and the oil and gas industry.

At Opmatic, we build our business on mutual trust and partnerships with our customers, and we go to great lengths to create the right solution at the right price.



Tel: +45 4110 2231 ■ [www.opmatic.dk](http://www.opmatic.dk)



## What we deliver

"Our passion – your benefit."

As a sustainable energy and resource recovery solutions provider with a holistic approach, Scandinavian Energy Contractor offers to deliver the complete solution. Our EPC and EPCM (Engineering, Procurement, Construction, and Management) methods reduce the client's risk, create realistic schedules, and ensure budget certainty.

Our Operations & Maintenance team analyses and fulfill the customer's needs, letting us put together a highly qualified and experienced team to design, build, staff, and safely operate the power plant.

### Value chain

Sales &  
Business Development

Engineering

Procurement

When preparing or modifying designs, we follow recognized standards and norms including CDM 2015, ensuring that the plant is safe to construct, operate and maintain.

# 1960s

Stationary  
power applications

# 1970s

EPC and turnkey contractor of  
engine-based power plants  
Service and spare parts

# 1980s

Technical Service Agreements  
Plant rehabilitation  
Turnkey contractor  
of power barges



## The blueprint for our projects:

**DESIGN**, Our experienced in-house experts calculate the full scope of the project and define the decisive work processes towards a completed energy or resource recovery facility.

**TEAM COMPOSITION & PROCUREMENT**, Highly competent engineers and project managers fill critical project roles, and we source materials of the best suitable quality. Our vast industry knowledge ensures an optimal supply chain throughout the process.

**TECHNOLOGY**, Suppliers of the plant's technical solutions connect directly with our design team to ensure a perfect integration of the plant's technology.

**QHSE**, Working environment and safety are a top priority on all our construction sites. All construction managers and project managers are trained to implement and enforce all necessary safety measures regarding the workplace QHSE management (Quality, Health, Safety, Environment).

**TEST & COMMISSIONING**, Our Test & Commissioning staff – in close cooperation with specialists in the Process department and the Operations & Maintenance team – complete tests of the entire plant to ensure proper functionality and maximum performance.

**OPERATIONS & MAINTENANCE**, Our highly skilled Operations & Maintenance employees have the experience to operate and tirelessly optimize the operation of the facility, as they know every corner of the facility. Since SEC embrace both EPC, EPCM and O&M, we are never far from each other in case of necessary repairs or development of the plant – which is a great advantage for the project and the customer.



Manufacturing

Construction

Test & Commissioning

Operations & Maintenance

1990s

Operations & Maintenance (O&M)  
Combined Heat and Power  
and Natural Gas  
Developer, financial  
engineering, investor

2000s

EPC and turnkey  
biomass power plants

2010s

Boiler supplier  
Waste-to-Energy  
Liquid Natural Gas-to-Power  
Operations & Maintenance on BWSC  
and non-BWSC built plants



# Availability, reliability, safety, and environment

"SEC develops, builds, operates, and maintains your sustainable energy and resource recovery solutions."

Our dedicated and highly experienced specialists in Operations & Maintenance are ready to take your plant to the next level. Specifically trained on the individual plant and with special attention to maximise facility output, we keep your plant in perfect state without risk to safety and environment, using proven procedures and safety systems.

Furthermore, SEC continues to upgrade your plant by proposing improvement upgrades, thereby keeping your facility up to date at all times.



## 2019

Extensive power plant lifecycle service

Waste-to-Energy: Advanced Conversion Technology and mass burn

Hybrid: Renewable, storage, and controllers with or without engines

## 2020s

Extensive power plant and boiler lifecycle service

Commercial and technical consultancy service

Plant and boiler upgrades and conversions

## 2021

SEC is a new venture, based in Allerød, originating from a carve out from BWSC's business. SEC is committed to designing, building, and operating sustainable energy and resource recovery solutions all over the world



**... ensuring a dust  
free, dry & safe  
workplace**

**mist-air** is a flexible dust and odour suppression system, which can be adapted to suit all sizes of buildings or operations. It is easily fitted to any site and can be retro-fitted to existing operating sites, ensuring a dust and odour free environment.



leaders in dust suppression technology ➤

Info@mist-air.co.uk • www.mist-air.co.uk

Contact us for  
more info:



**+44 1691  
828487**

PRESSURE

TEMPERATURE

LEVEL

FORCE

FLOW

CALIBRATION

## Measurement Solutions by WIKA



Part of your business

**WIK A Danmark A/S**

wikadanmark.dk

info@wika.as

+45 4581 9600

### When you need a stationary cleaning system, we'll custom-make it for you.

Do you need to get rid of dirt and dust in your plant, or take care of and recycle spillage from your production? You define your needs and we suggest a setup that will match them.

We know that the cleaning is mission critical – so our service and maintenance programs will make sure that the equipment just keeps running and running, year after year...



www.disab.com

ContactUs@disab.com

+46 (0)8 51 45 05 70





PROCESS



EMISSIONS



AMBIENT

**ENVEA** is a world-class manufacturer of turnkey solutions for ambient, emission and process monitoring systems for industry, laboratory and local government institutions.

We assist organizations in complying with applicable regulations and with optimizing industrial processes for improved efficiency and reduced environmental impacts:

✓ **Industrial process optimization solutions**

Monitoring instruments for process control: powders and bulk solids flows, baghouse filter damage control, leak alerts, flue gas and solid flow, moisture monitoring, particulates ...

✓ **Continuous Emissions Monitoring (CEMS) for regulatory compliance**

Gas, flow and particulates, dioxins & mercury samplers, data acquisition, management and emission monitoring for incineration, power, biomass, cement plants, chemical industry, iron & steel ...

✓ **Ambient air quality monitoring**

Multi-parameter air quality monitoring reference stations (gases and particulates), sensor-based micro-stations, data management solutions for urban and industrial air pollution monitoring networks ...

## NEW GENERATION OF MERCURY CEMS



Meet the latest regulations for waste incineration and large combustion plants with the new ENVEA SM-5

- ✓ QAL1-approved to EN 15267 with the lowest range on the market of 0-5  $\mu\text{g}/\text{m}^3$



- ✓ Additional certification ranges: 0-30 / 0-45 / 0-100 / 0-1000  $\mu\text{g}/\text{m}^3$

- ✓ Calibrator-free operation for reliability and reduced operating costs

- ✓ Short response time and stable measurement under all circumstances



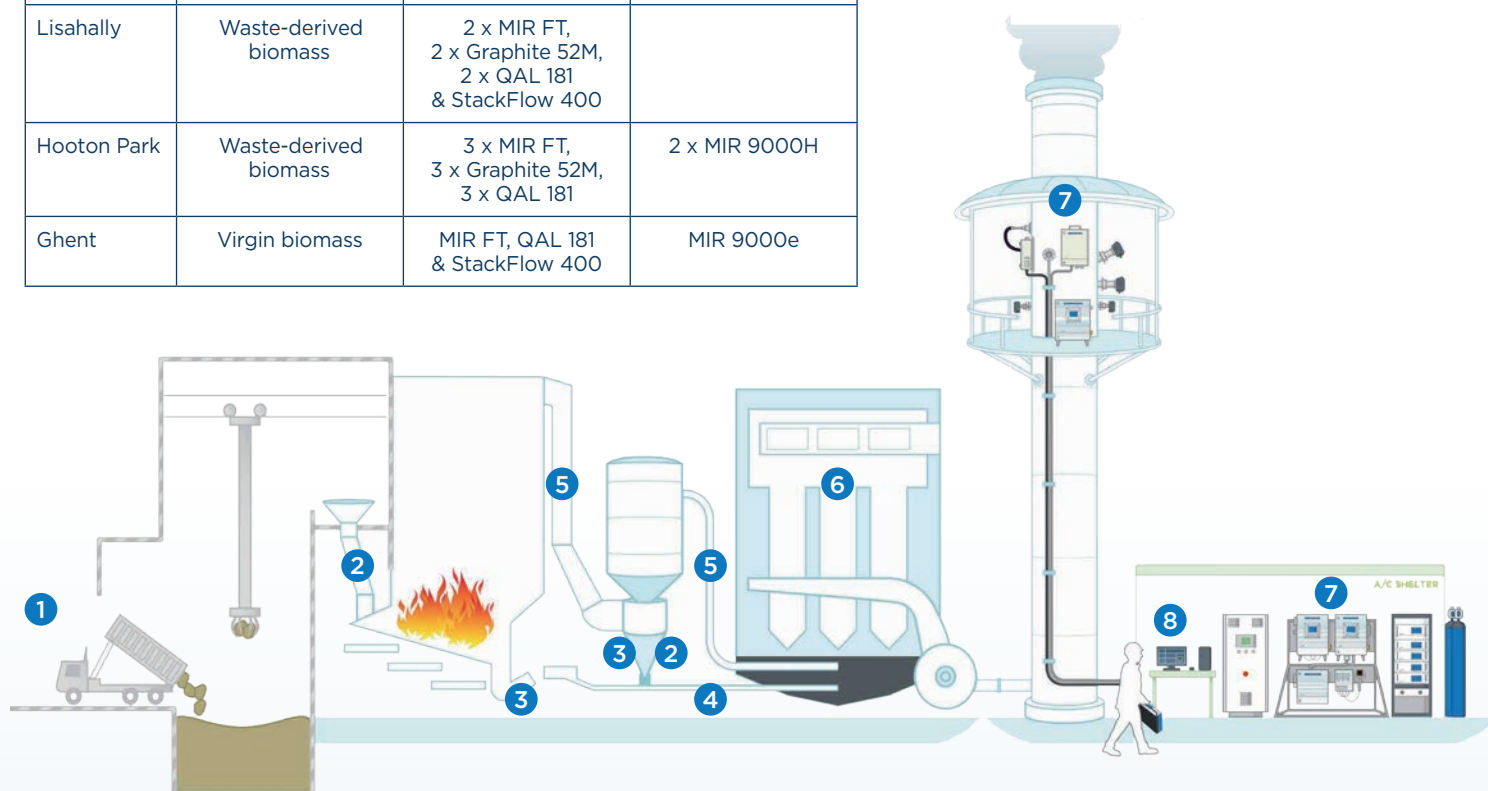


## BIOMASS & ENERGY FROM WASTE

**ENVEA** offers many years' experience in the Biomass & Energy from Waste sectors. Our skilled engineers are able to provide a complete turnkey service, from emission & process monitoring system design, through to installing, commissioning, calibration and service support contracts.

### Recent project examples:

Site	Feedstock	CEMS Equipment	Process Equipment
Sleaford	Virgin biomass (straw)	MIR FT, QAL 181 & StackFlow 400	Dust Alarm 40
Brigg	Virgin biomass (straw)	MIR FT, QAL 181 & StackFlow 400	MIR 9000H, MIR 9000e
Lisahally	Waste-derived biomass	2 x MIR FT, 2 x Graphite 52M, 2 x QAL 181 & StackFlow 400	
Hooton Park	Waste-derived biomass	3 x MIR FT, 3 x Graphite 52M, 3 x QAL 181	2 x MIR 9000H
Ghent	Virgin biomass	MIR FT, QAL 181 & StackFlow 400	MIR 9000e



- 1 Process leakage and odor detection: Cairnet and Micro-sensors
- 2 Material flow detection: FlowJam
- 3 Continuous level detection: ProGap 2.0
- 4 Mass flow measurement of absorbent: SolidFlow 2.0, PicoFlow
- 5 Process gas monitoring: MIR 9000H, MIR 9000e, MIR FT
- 6 Predictive bag filter row monitoring: Leak Locate 320
- 7 Emission monitoring gas, dust & flow: QAL 181, StackFlow 400
- 8 Data acquisition, processing & reporting (WEX™)





## Our projects

"We build and operate all over the world, taking different cultures, supply needs, and local conditions into account."

We encourage each customer to partner with us to design, build, and operate your sustainable energy and resource recovery facility.

Our team's experience in delivering sustainable energy solutions is showcased in a selection of project references here.

Use the QR-code to read more about our projects - and to watch a short video showing the construction of one of our power plants in "fast-forward speed".



Read more about our projects here



**Hooton Park Resource Recovery Centre**  
Gasification based on Kobelco bubbling fluidised-bed technology, with melting furnace and a horizontal boiler with vertical economisers.

### FLO-CODE®

Rørmærkningssystem

[www.flo-code.dk](http://www.flo-code.dk)

## Pipe markings and signs

At Flo-Code you get the original branded product within pipe markings and other signs, where the system provides detailed information about the functions of your pipes.



Air d'service

Air d'service

Husmandsvej 25 · DK-2630 Taastrup · Tel: +45 43 99 55 96 · [admin@flo-code.dk](mailto:admin@flo-code.dk)





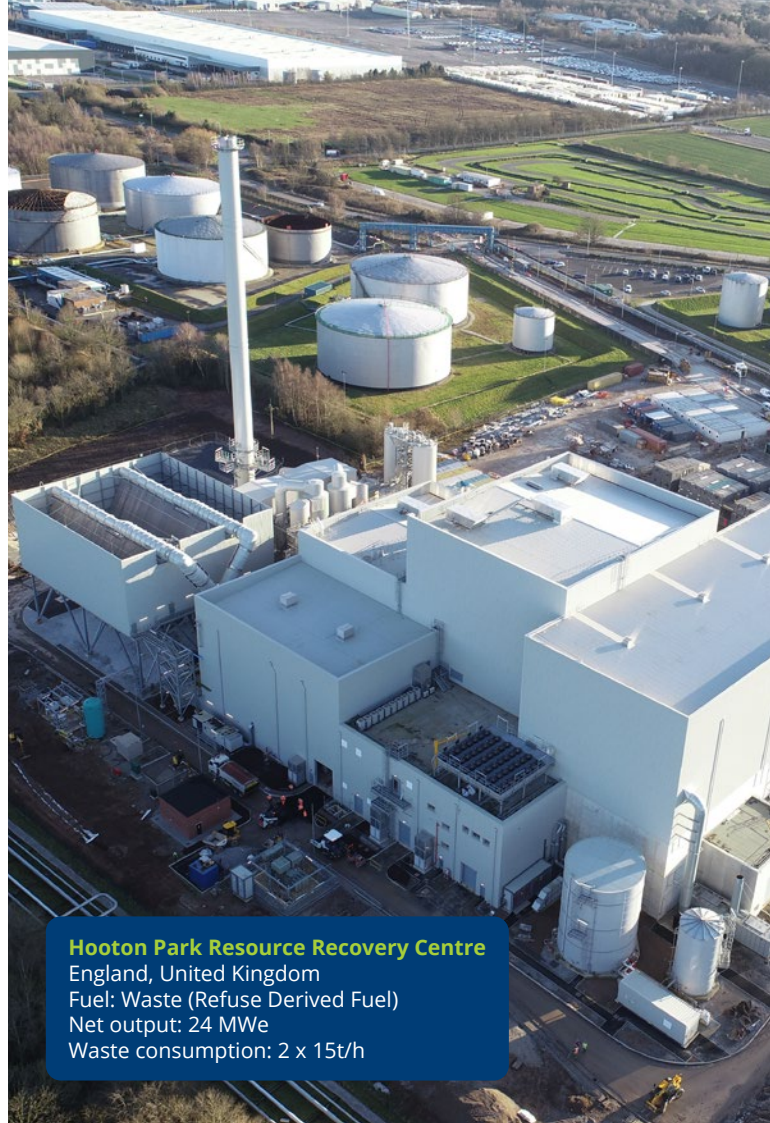
### **Tilbury Green Power Plant**

England, United Kingdom

Fuel: Recycled wood

Net output: 40 MWe

Fuel consumption: 285,000 tonnes/year



### **Hooton Park Resource Recovery Centre**

England, United Kingdom

Fuel: Waste (Refuse Derived Fuel)

Net output: 24 MWe

Waste consumption: 2 x 15t/h



### **Lisahally Biomass Plant**

Northern Ireland, United Kingdom

Fuel: Recycled wood

Net output: 15.8 MWe + 6.1 MWth

Fuel consumption: 110,000 tonnes/year



### **Widnes Biomass Combined Heat and Power Plant**

England, United Kingdom

Fuel: Waste wood

Net output: 20.3 MWe + 7.8 MWth

Fuel consumption: 145,000 tonnes/year



**Specialist in  
Customized Modular  
Process Skids**

**biosteel a/s**

[www.biosteel.dk](http://www.biosteel.dk)





# Handpicking the team of the future

It is an immense task to build a better future, which is why Scandinavian Energy Contractor always has an extra spot on the team for talented people who want to help guide us in the right direction.

We are always on the lookout for experienced industry professionals who can take the lead on complex projects and help us create a dynamic future.

Enterprising, business-oriented professionals can always find new development opportunities with us, regardless of whether they have strong skills as team leaders in the office or as project managers on the construction site.



Visit our jobs  
section here

The logo for KRAL, featuring the word "KRAL" in a bold, red, sans-serif font. The letters are slightly shadowed, giving them a three-dimensional appearance as if they are floating above the water.

Represented by  
[www.pumpac.dk](http://www.pumpac.dk)

KRAL magnetic coupling pumps are hermetically sealed.  
That's how we contribute to keeping nature clean.



Our head office is located in Allerød north of the capital Copenhagen in Denmark. Here, our experts within the various disciplines are located in nice, relaxed facilities - which we in the best sustainable style share with a number of other companies.

# Sustainability

"We are driven by promoting sustainability in the world."

Scandinavian Energy Contractor was created to promote sustainability in the world.

We develop circular economy business models and work with CO2 neutralisation while simultaneously creating energy for myriad functions in our society.

At SEC, we are inspired by the UN Sustainable Development Goals, and we have prioritised working with these five goals:



Established in 1978, Harris Pye UK is a market leader for design, supply, installation, erection, repair and maintenance services for your EfW / bio-mass plant

- Boiler
- Structural steel
- Ducting
- Piping
- Insulation
- Equipment & machinery
- DCS / ICSS
- Electrical & instrumentation
- Workshop fabrication
- Boiler and plant condition inspection
- Skilled outage labour
- Boiler repair incl. superheater, economiser and refractory replacement
- Upgrade & modifications
- Efficiency & operational improvements



Harris Pye UK Ltd.  
Sutton Road, Llandow, Wales, CF71 7PB  
Tel.: +44 (0)1446 720066  
Email: [HPUK@harrispye.com](mailto:HPUK@harrispye.com)  
Web: [www.harrispye.com](http://www.harrispye.com)



**Do not hesitate to contact us**



"We are ready to create value for you  
and your customers."

**SCANDINAVIAN ENERGY CONTRACTOR A/S**

Gydevang 39-41 | DK-3450 Allerød | Denmark

T: +45 3226 6400 | [info@secontractor.dk](mailto:info@secontractor.dk) |

[www.secontractor.dk](http://www.secontractor.dk)

VAT no.: 42249963



Go to our  
webpage here

In the pleasant surroundings of the auditorium we have the opportunity to hold conferences, training sessions, and various events for you and your stakeholders.

The varnish used  
in this brochure is  
100% biodegradable.



Water treatment for heat and power plants

**EUROWATER**  
A GRUNDOS COMPANY

[euowater.com](http://euowater.com)

Worldwide supplier of  
shipper-owned containers

**DANCONTAINER**

Tel: +45 7023 4100 • [ci@dancontainer.dk](mailto:ci@dancontainer.dk)

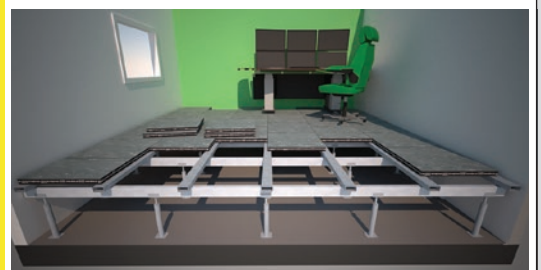
The Interactive Brochure  
is designed and delivered  
by **JS Denmark**



**JS/DANMARK**  
[www.jsdanmark.dk](http://www.jsdanmark.dk)

**ELAVO**  
Floorsystem

**JANAKE BERGH & CO AB**



Elevated Floor • Access Floor • Heavy Duty Access Floor

[www.bergh-co.se](http://www.bergh-co.se) [info@bergh-co.se](mailto:info@bergh-co.se) +46 31 797 11 00