



SeaMech

WE TAKE COMMERCIAL **FISHING** TO A HIGHER LEVEL

YOUR MARITIME ELECTRONICS PARTNER

SeaMech supplies, installs, and supports electronics for the maritime profession. We specialize in advanced electronics and electrical installations for a wide range of vessels. The company has been around since 1994 and has since the start been located in both Skagen and Hirtshals. Our geographical locations enable us to service a wide range of vessels quickly and efficiently, so that our customers avoid spending unnecessary time in port.

ALL-ROUND SOLUTIONS

At SeaMech, we are proud to deliver all-round solutions to our customers. We work holistically with our customers, which means that they only have to call one place. Our large team of service technicians consists of two professional groups, and we solve all challenges within electricity and electronics. We are service-minded and flexible and can solve a wide range of tasks.

YOU CAN ALWAYS CALL US

... and we mean that! Whether you are in port or at sea, do not hesitate to call us if you experience technical issues. You are always welcome to call us again, and together we can ensure that you get the most value for your equipment.

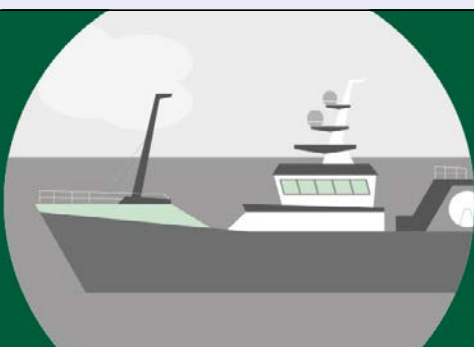
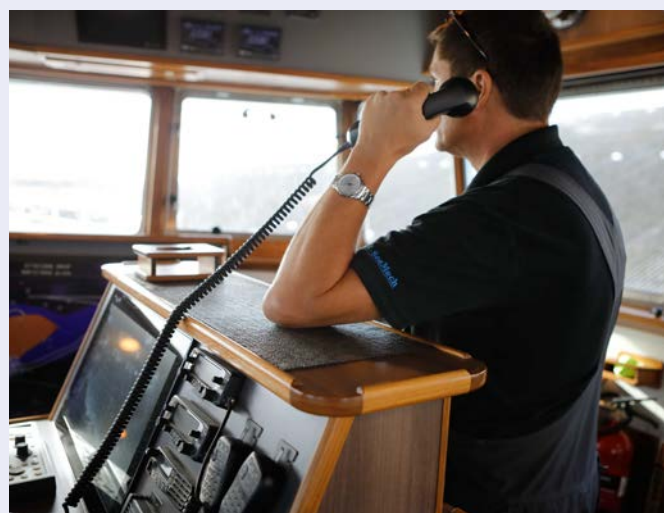
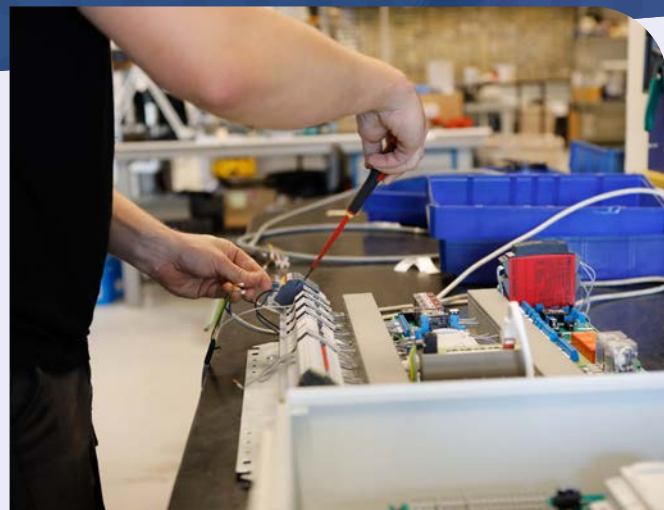


WE'LL MEET YOU WHERE YOU ARE

We know how much it costs when a ship has to wait for repairs. Therefore, flexibility is a key word for us. When customers call us from sea, we guide over the phone, and if necessary we meet them where they plan to dock. With more than 14 service technicians located in Skagen, Hirtshals and Strandby, we are always ready to assist – so you can be up and running as soon as possible!

**"IF A CUSTOMER CALLS AND
SAYS 'WE HAVE A PROBLEM
AND WE ARE WE WILL BE IN
PORT BY 8 PM', WE GET IN THE
CAR AND MEET THEM THERE"**

– Mark, CEO of SeaMech



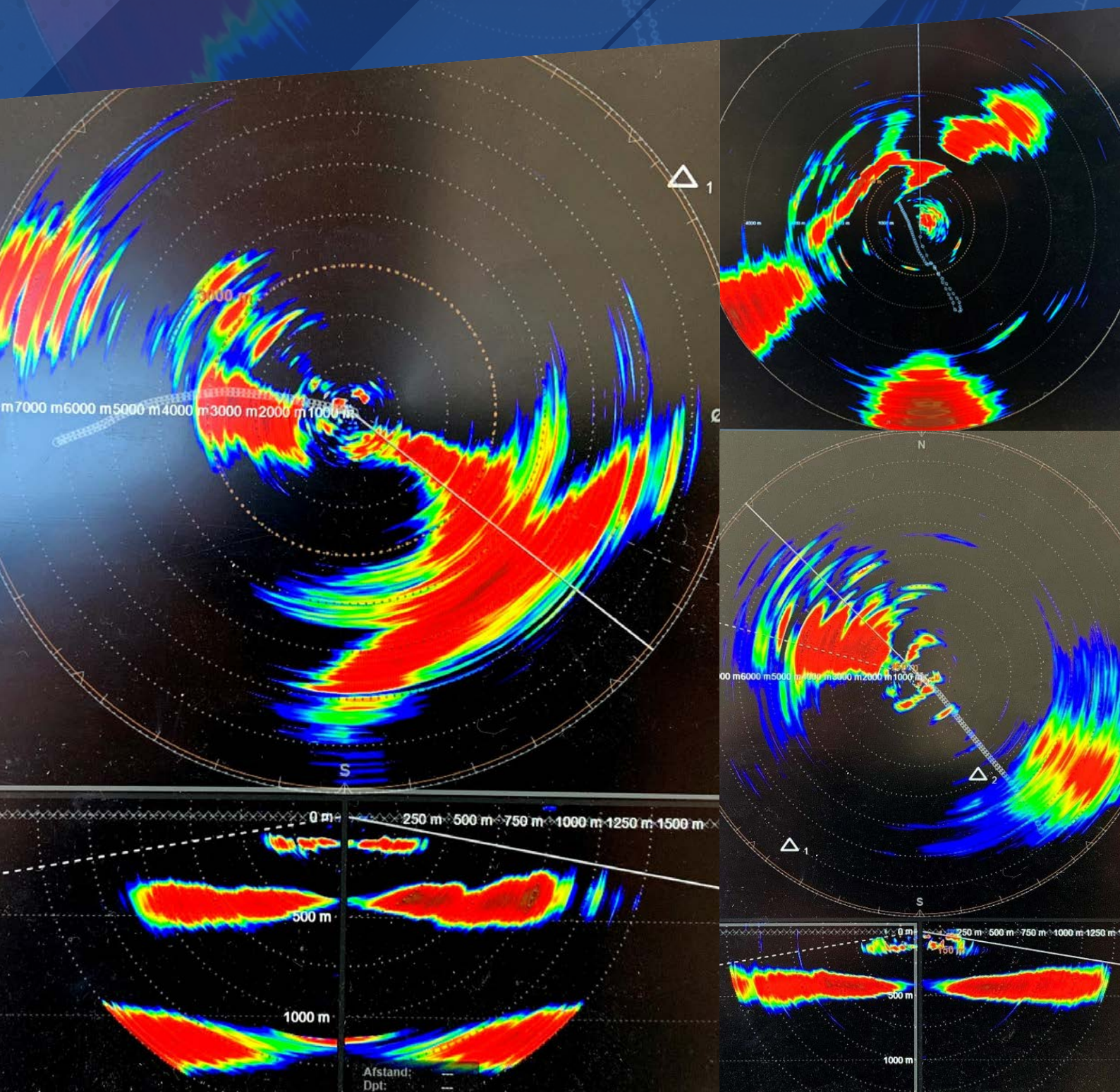
Fiskeri

– en god økonomi er en fangst

Tal med os – vi har mange års tæt samarbejde
med både fiskere og servicevirksomheder.



WHEN ONLY THE BEST IS GOOD ENOUGH



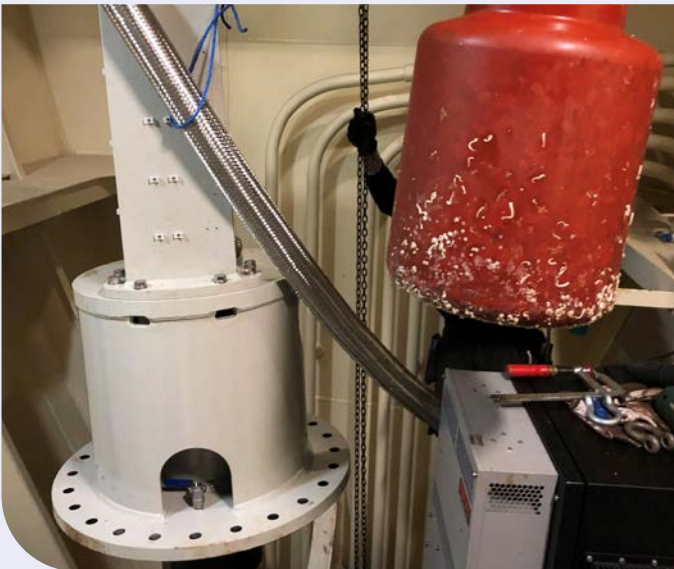


Over the past 25 years, we have specialized in fishing technologies. We focus especially on sonar systems, and our strong skill sets in this field have made us the leading retailer of sonar in Denmark. Our extensive experience and close collaboration with suppliers ensures you top-notch quality. We work closely with leading suppliers and install sonar systems every year. All our suppliers undergo a thorough quality check to make sure we only deliver the very best to our customers.

24/7 SERVICE

We install and support all kinds of sonar 24 hours a day, 7 days a week. We specialize in remote assistance and optimization of sonar systems while the boat is operating at sea.

With us as your partner you get the best value for money and the most out of your sonar system. The advanced sonar technology must be adjusted with the changing conditions at sea, and we are always ready to help set the system optimally. It may take experience to optimize the system, and our continued support allows you to see the full potential of your investment. You can always call again – we provide remote assistance 24/7 and in all weather conditions.



SIMRAD SONARS
ALREADY A SUCCESS!



KONGSBERG

NEW
SY50



SIMRAD
By KONGSBERG

Technologies for sustainable fisheries

kongsberg.com/simrad

HISTORICAL FLASHBACK

Since 1994, we have specialized in advanced electronic solutions for the marine industry.

1994

The company is established

2000

We install the first SeaController

2012

SeaController no. 100 delivered

2019

We open our service office in Strandby

2021

SeaController no. 200 delivered

2008

New headquarters on Vestmolen in Skagen

2016

New management and ownership

2020

New location in Hirtshals



In 2000 we installed SeaController on the first ships – today, several are still in operation with our system.



Advokatfirma der tilbyder personlig og professionel juridisk rådgivning

Har du brug for en dygtig advokat til at varetage dine juridiske sager eller spørgsmål? Hos Advokatfirmaet Espersen i Frederikshavn kan vi tilbyde juridisk rådgivning inden for mange forskellige områder, og vi lægger stor vægt på at give dig en både personlig, men samtidig også professionel bistand.



**Advokatfirmaet
ESPERSEN**

Tordenskjoldsgade 6 · 9900 Frederikshavn · Tlf.: 98 43 34 11
esp-law@esp-law.dk · www.esp-law.dk



Kontakt os og
hør hvordan vi
kan hjælpe dig
98 43 34 11

Specielt fiskeriets
retsområde

World-Class Service

Since Isafold was built at Karstensens Skibsværft A/S in 2006, the vessel has used Scanmar's sensors and bridge systems. Still, after 15 years in service, the Scanmar sensors are fully functional onboard the vessel.



Since Isafold was built at Karstensens Skibsværft A/S in 2006, the vessel has used Scanmar's sensors and bridge systems. Still, after 15 years in service, the Scanmar sensors are fully functional onboard the vessel.

The recipe for that is to look after and take care of the equipment on board. Even if Scanmar makes unbreakable sensors, they need some love. Isafold and the sensors rely on the service they get from their local service partner.

Skipper Karsten Mølgaard, Isafold, and CEO Mark Christensen, SeaMech, have been solving challenges together for years. Isafold is packed with robust, yet sensitive equipment on board and needs to be functional 24/7.

The service Isafold gets from SeaMech is important for the operational status. Many of the Scanmar sensors from 2006 are still in use on Isafold. But from time to time they need to be updated or checked by certified personnel. The service personnel from SeaMech have the necessary training and skills to solve almost any problem onboard the boat. If they meet unexpected challenges, they can get the help they need from Scanmar's head office in Norway. The service department can reach almost any harbour in the world within 24 hours. But Hirtshals is only a 3-hour ferry trip away from Åsgårdstrand in Norway. Together, SeaMech and Scanmar provide World-Class Service to Isafold and many other vessels around the world.

About SeaMech

SeaMech is a marine electronics company established in 1994. They specialize in the installation and repair of advanced electronics, including regulation and control technology and electrical installations for a wide range of vessel types. The geographical location of the 3 departments / workshops at the Danish ports of Skagen, Strandby and Hirtshals enables SeaMech to provide World-Class Service to different vessels quickly and efficiently, which means that they avoid long-term spells in harbour. SeaMech's employees have received specialist training in the use and repair of state-of-the-art electronics. They have received the Danish Maritime Authority's GMDSS certificate and are thus authorized to service the Global Maritime Distress and Safety System. SeaMech offers total installations and service 24 hours a day, 365 days a year. They call it World-Class Service.

More info: www.seamech.dk

About Isafold

The vessel HG 333 Isafold is a combined purse seine and pelagic trawler, which was built in 2006. Isafold fishes in the North Sea, Skagerrak and North Atlantic mainly for herring and mackerel. Isafold is 76.25 m long and sails with a crew of 10-11.

About Scanmar

Scanmar was the pioneer of cable-free Catch Systems in 1980 and has remained the world leader of development and production for the global fishing industry. Close collaboration with fishermen, research institutes, service partners and others in the industry has given the knowledge to develop products with high utility value, ensuring increased efficiency and cost savings.

Scanmar's sensors and bridge systems are acknowledged for their advanced technology and high quality, and Scanmar is constantly aiming to improve the products by listening to customers and users. Since the beginning, Scanmar has invested around 500 million Norwegian kroner in the development of robust, reliable and innovative products. Globally, Scanmar has sold over 5,000 bridge systems and 50,000 sensors.

More info: www.scanmar.com



Being close to the harbour is essential for the skipper and crew



Skipper Karsten Mølgaard, Service Manager Mark Christensen from SeaMech and Service Manager Nils Fjeld from Scanmar



Mark Christensen at the office checking Scanmar's sensors



SEACONTROLLER

– YOUR PARTNER AT SEA

At SeaMech, we have designed and developed our own propulsion control system, SeaController. Based on our extensive knowledge and experience in this field, we have developed the system in collaboration with gear and engine manufacturers, shipyards, and end users.

SeaController is tailored to give our customers better control at sea. The electrical system controls propulsion, engine, and gear, and has over the years proven to be an indispensable tool for both skipper and crew.

SeaController makes it possible to control the ship's engines optimally, and can be delivered to many types of engines and gear – both mechanically and electrically controlled – and provides full PTO control with safety function when connecting and disconnecting. As a standard the system is delivered with up to four maneuvering positions on bridge, deck, or control room – with the option to expand as needed – and is built for a wide range of options. It is easy to operate, and is extremely flexible and adaptable to the individual vessel. With Seacontroller, control of the engine is more precise, resulting in significant energy savings. Integrating it with DP or autotrawl optimizes the precision and efficiency of the system.

With Seacontroller, you get simple, reliable, and accurate control of your vessel.

RELIABILITY

SIMPLICITY

PRECISION

CONTROL



ELECTRICAL CONTRACTOR

As authorized electrical contractors, we offer installation and service on all electrical installations on board, such as:

- Annual test of alarm system for unattended machinery spaces (E0)
- Testing and calibration of temperature sensors for e.g. RSW systems
- Insulation measurement/Megger test
- Control, automation and remote control
- Switchboard production
- Installation for main engine and generator systems
- Monitoring and alarm systems
- Wire length measuring system

We also offer sales, installation and service on all electronic installations on board:

- Sonar, trawlsnar, echo-sounder, multibeam echo-sounder
- Catch Control from Scanmar, Marport, Notus, Simrad
- VSAT, SAT-TV, Iridium, Fleet BB, Inmarsat
- GMDSS radio equipment and radio survey
- Radar, GPS, AIS, ECDIS, Fishing Plots
- GPS Compass, gyroscope, autopilot
- Matrix, monitors, monitor control system, e.g. Florvaag FMCS
- CCTV monitoring, IP camera and network installations

SEACONTROLLER HAS BEEN INSTALLED ON MORE THAN 200 VESSELS OVER THE YEARS, INCLUDING:

- Fishing vessels
- Cargo ships
- Tugs
- Pilot boats
- Search and rescue vessels
- Survey vessels
- Fishery education vessels
- Dredging vessels

KODEN



www.seatech.dk
+45 58374711

SeaTech



- 📍 **SKAGEN** VESTMOLEN 15 · DK-9990
- 📍 **HIRTSHALS** LÆSSEVEJ 16 · DK-9850
- 📍 **STRANDBY** RØDSPÆTTEVEJ 5 · DK-9970

PHONE: +45 98 44 15 67
EMAIL: SKAGEN@SEAMECH.DK



COBHAM
OFFICIAL PARTNER



Vi er færdige og sender fangstrapporten med det samme

Danmarks største leverandør af Internet og TV til søs. - Seasat A/S er det rette valg!

Tlf.: +45 4494 5406 | E-mail: info@seasat.dk


SEASAT^{A/S}
COMMUNICATION AT SEA