



**WIND TODAY**

**GREEN TOMORROW**

---

 **GRENE**  
WIS



**WELCOME TO GRENE WIS**

## **PIONEERING SOLUTIONS IN WIND ENERGY**

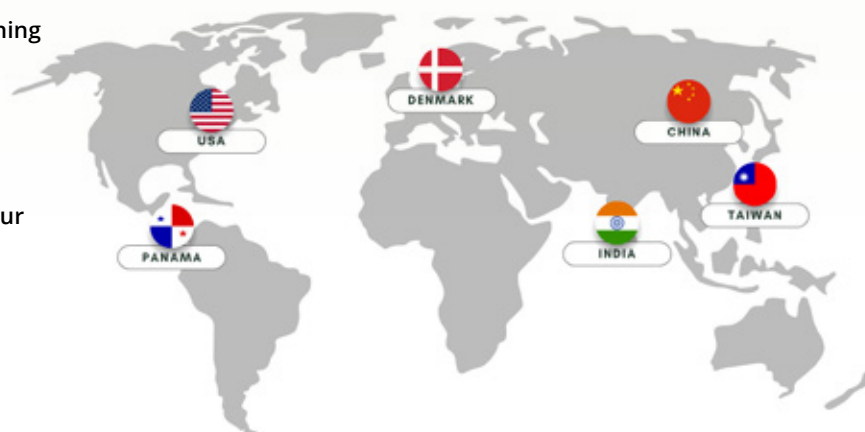
Grene Wind Industry Supplies A/S is a Danish company established in 2006 with a focus on providing customers with the best quality products and services on a global scale. Grene WIS is one of the largest international suppliers of spare parts and products for the energy sector and the wind turbine industry, onshore and offshore.

With an extensive product portfolio reaching well over 20,000 products, our product categories include everything from hydraulic tools and custom solutions for the energy sector to lifting gear and tools for the maintenance of wind turbines.

As your full-service solutions partner, we strive to be your only source for all your needs.

As a global company, we are always looking to develop and expand in order to meet demand, so we are considering countries where it makes strategic sense to establish ourselves.

Today, Grene WIS is established in six countries: Denmark (2006), China (2010), India (2021), Panama (2022), USA (2023), and Taiwan (2023).





## A FAMILY'S VISION

### THE BAGGER-SØRENSEN LEGACY

Bagger-Sørensen & Co. A/S is a Danish family-owned holding and investment company, represented and owned by the fourth generation of the family, respectively Steen and Claus Bagger-Sørensen.

The company was founded in 1915 in Vejle, Denmark, and started out as a confectionery and chewing gum producer known as Dandy – creator of the famous brands STIMOROL, V6, and Dirol. By 1927, their first products launched, and during the 1950s, through export, their products became a global success. Later, in 2002, these brands were sold.

#### Bagger-Sørensen today

At present time, Bagger-Sørensen & Co. has well over 600 employees and owns an investment profile through two companies: Bagger-Sørensen Invest (real estate) and Vecata Invest. By 2020, Bagger-Sørensen & Co. A/S founded Bagger-Sørensen Equity A/S in order to invest in smaller companies with growth potential.

The family focuses on long-term value creation through strong customer relationships and has over one hundred years of successful industrial history. Their main goal is to develop and grow companies in a responsible manner.

With more than a hundred years' worth of industrial entrepreneurship and success behind them, Bagger-Sørensen focuses on investing in smaller and medium-sized companies who possess potential for growth – particularly companies with products or services supporting the UN's Sustainability Goals.

With Bagger-Sørensen backing the individual companies like Grene WIS, it enables companies to pursue ambitious agendas, develop, and helps them achieve their full potential.

EXPANDING HORIZONS

# STRATEGIC SUBSIDIARIES

In 2022, as part of our growth strategy, Grene WIS Group added two companies with expertise in the wind turbine industry – namely, NOS A/S and MPASIA A/S – to our portfolio. These strategic collaborations and the global expansion of Grene WIS were made possible with the support of Bagger-Sørensen. NOS A/S, a leader in lifting solutions, and MPASIA A/S, specializing in high-quality tarpaulins for the wind industry, have now integrated into the Grene WIS family, improving our service offerings.



## **ENERPAC**

Wind turbines of the future will be significantly larger than ever before, presenting greater challenges for the industry in machining, handling, assembly, lifting, transportation and maintenance.

That's where Enerpac comes in...

**ENERPAC.COM**

DISCOVER THE RIGHT TOOLS  
**TO EMBRACE THE FUTURE OF WIND**



**THE RIGHT TOOL MAKES ALL THE DIFFERENCE**



NOS A/S

## ELEVATING INDUSTRY STANDARDS

NOS A/S, established in 2009, brings excellence in lifting solutions across Europe. Their comprehensive range, including steel wire ropes, lifting chains, and customized solutions, coupled with rigorous testing and certification, ensures operational safety and efficiency.



MPASIA A/S

## PROTECTING THE FUTURE

Since 2022, MPASIA A/S, under Grene WIS, has continued its legacy of providing premium tarpaulins, crucial for protecting onshore and offshore wind turbines. Their global supply chain and customer-specific designs demonstrate our commitment to tailored solutions.



**Alesco**<sup>®</sup>  
INDUCTION HEATERS

WWW.ALESCO.SE | SALES@ALESCO.SE

**PRATEC**  
**GROUP**

- Generators 1-3360 kVA
- Customized solutions

www.pratec.dk



**KUKKO // Pull forward**



**Pullers, Tools and  
Solution development  
for more than 100 years**

**VÖLKEL**  
THREADING SOLUTIONS



**Since 1915  
Worldwide competence  
in threading tools**



DELIVERING QUALITY SOLUTIONS

# LOOKING FOR AN ALL-IN-ONE SOLUTION

At Grene Wind Industry Supplies A/S, we offer full-service solutions for the green energy sector. Our services include comprehensive container solutions, technology transfer, certification and calibration of various instruments, and environmentally friendly corrosion protection. We specialize in automation services and provide repair services for wind turbine components.

We also offer custom tarpaulin solutions, comprehensive crane and lifting gear services, and the production of custom-made tools and equipment. For clients with specific needs, we create tailored solutions, ensuring a complete package for development, manufacturing, and repair in the energy sector.

EXPLORE THE INSEMITO SYSTEM OFFERED IN PARTNERSHIP WITH GRENE WIS:

# REDEFINING SPARE PARTS MANAGEMENT

Insemito is a digital system designed to deliver an efficient solution within spare parts management for the energy industry. By integrating advanced technology and user-friendly design, we offer a platform that revolutionizes how businesses manage their inventory, equipment, and operations.

Through Insemito, you can take control of your stock, equipment, and spare parts from any location. It is a modular, cloud-based system that centralizes all your data and documentation and provides complete transparency on the status of each component.

This ensures that all your equipment is always up-to-date, accessible, and handled correctly.

## Digital transformation

We offer a modular, cloud-based system. This allows you to adapt Insemito to your specific needs and create a future-proof infrastructure.

## Flexibility and availability

Insemito's modular structure allows you to choose the functions that best suit your business.

## Transparency and optimization

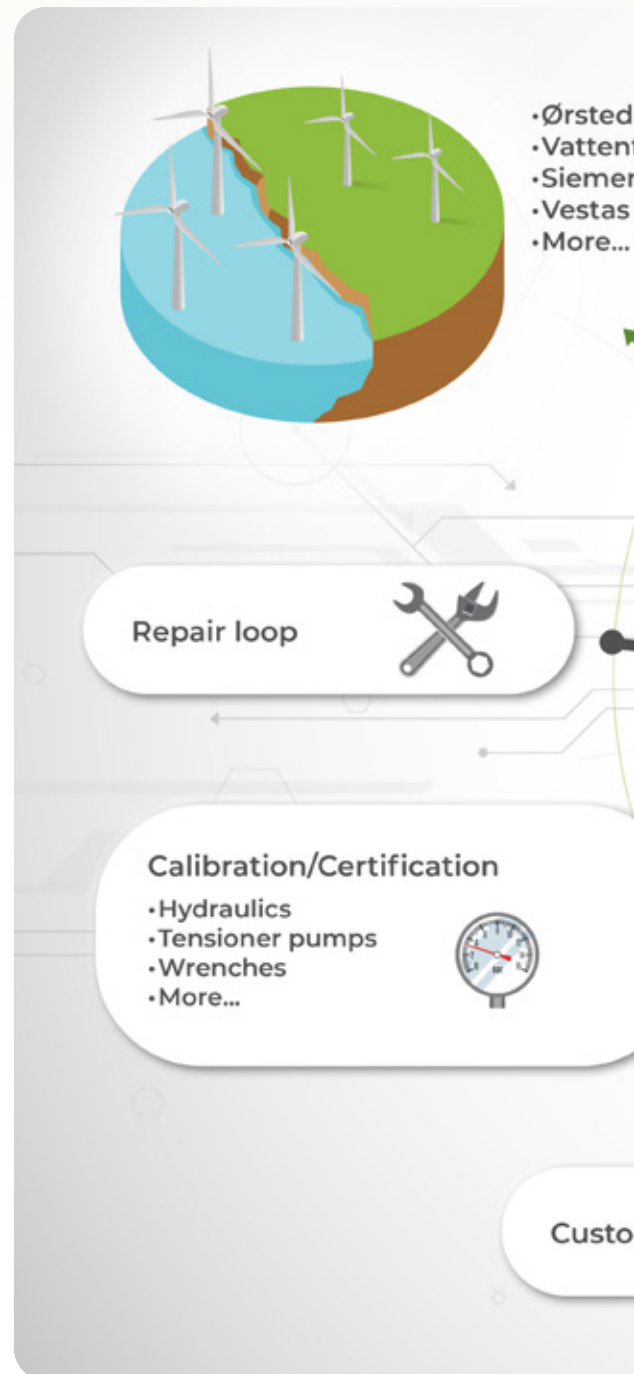
We provide transparency in all aspects of company operations. With centralized data and documentation, you can optimize inventory management and improve decision-making processes.

## Business advantage

Insemito gives the company a competitive advantage by eliminating downtime, improving efficiency, and ensuring that the right spare parts/tools are always available. It is an investment in a more streamlined and safe operation.

## Support and customized solutions

Our support team is always ready to help optimize your use of Insemito. We also offer tailor-made solutions to meet customers' specific needs and objectives.





fall  
ns

MCE Operations



Items in stock

- 100,000+ Standard products
- 4,500+ Customs products
- 50,000+ Items available from EU warehouse



Lifting gear

- NOS
- Actsafe
- More...



**GRENE**  
WIS  
**360° Solution**

m design



Hydraulics

- Enerpac
- Rehobot
- More...



Powered by  
**INSEMITO**  
a part of CSK Group



# ROCKSTEEL

**SUPPLIER OF WELDING STRUCTURES**

EN ISO 9001: 2015, EN ISO 14001: 2015  
EN ISO 3834-2, EN ISO 1090-2 acc. EXC 3

[mn@rocksteel.cz](mailto:mn@rocksteel.cz) • [www.rocksteel.cz](http://www.rocksteel.cz)



- Earthing and short-circuiting devices
- Insulation poles
- Contact fittings
- Voltage detectors
- Aluminium substation clamps
- Copper flex fittings
- Insulators
- Connectors

Tel.: +45 3153 7725

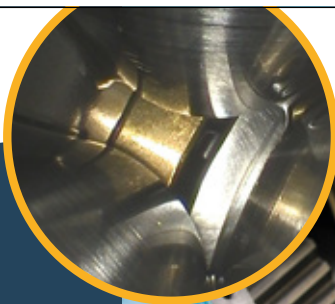
[Sales@krohn.dk](mailto:Sales@krohn.dk)

[www.krohn.dk](http://www.krohn.dk)

# ENDOTEST

Total inspection of wind turbine gearboxes

- Olympus IPLEX G-Lite 4mm
- Proactively prevent breakdowns to prolong equipment lifespan



+45 44 84 40 80  
[mail@endotest.dk](mailto:mail@endotest.dk)  
[www.endotest.dk](http://www.endotest.dk)



HOVE SMART LUBE

# MAINTAIN SMARTER, MAINTAIN CONTROL

Hove Smart Lube is a field-proven digital solution. Plug it into your operations, get full traceability and maintain control of everything linked to lubrication.



Clear overview and documentation



Correct lubrication and reduced footprint



Easy implementation and handling



Real-time tracking and full traceability



# EXPERTISE IN SERVICE AND REPAIR

Our commitment to excellence extends beyond supplying products. We provide top-tier service and repair solutions, ensuring that your equipment operates at peak efficiency and reliability. Trust us to maintain and enhance the performance of your hydraulic, electrical, and automation systems, driving the success of your energy projects.



PRECISION AND PERFORMANCE

## HYDRAULIC SERVICE



Expect swift and expert service for all your hydraulic needs within the wind turbine industry when you choose Grene WIS. As authorized service partners for Enerpac and Rehobot in Denmark, our team consists of highly skilled technicians dedicated to repairs, servicing, annual inspections and calibration of diverse hydraulic tools and components. With great experience handling brands such as Enerpac, Rehobot, Simson, ITH, and Cejn, our technicians ensure exceptional performance.

**Our capabilities include servicing and repairing:**

- ✓ Hydraulic pumps
- ✓ Hand pumps
- ✓ Cylinders
- ✓ Torque wrenches and tightening tools
- ✓ Couplings
- ✓ Hoses



## GUDMANN & SØN

VESTERVEJ 17 • 8400 EBELTOFT • TEL: 86 32 04 56  
WWW.GUDMANN-SEJLMAGER.DK

## Specialised tasks for industry & offshore

### *High quality and craftsmanship*

We are a broadly operating sailmaking company and take care of all kinds of tasks, including tarpaulins, canopies and specialised tasks for industry and private customers.

In addition to a sailing shop, the company consists of with a wide range of products within sailing, leisure and fishing.





**ADVANCED TROUBLESHOOTING AND REPAIRS**

**AUTOMATION**

In the realm of automation, our expertise lies in efficiently troubleshooting a variety of automation tasks:

**Electric controls**

Identifying and fixing faults on a variety of electrical control components.

**Frequency converters**

Service and repair solutions of frequency converters, no matter the brand type.

**Transformers**

Repair of various electronics and automation systems, like control panels, engine controls, power cables, etc.

**Diverse electronics and equipment**

Proficiency in identifying and rectifying faults in various electronics and equipment, from control panels to engine controls and power cables.

We also offer comprehensive service and repair solutions for power plants and biogas plants, including submersible pumps, agitators, and electric motors.



**COMPREHENSIVE CARE FOR MOTORS AND MORE**

**ELECTRICAL**

At our workshop, we believe in the power of restoration. We are dedicated to revitalizing and optimizing tools and engines. Our expertise covers a range of models from respected brands like Hove, Beka, and SKF Lincoln.

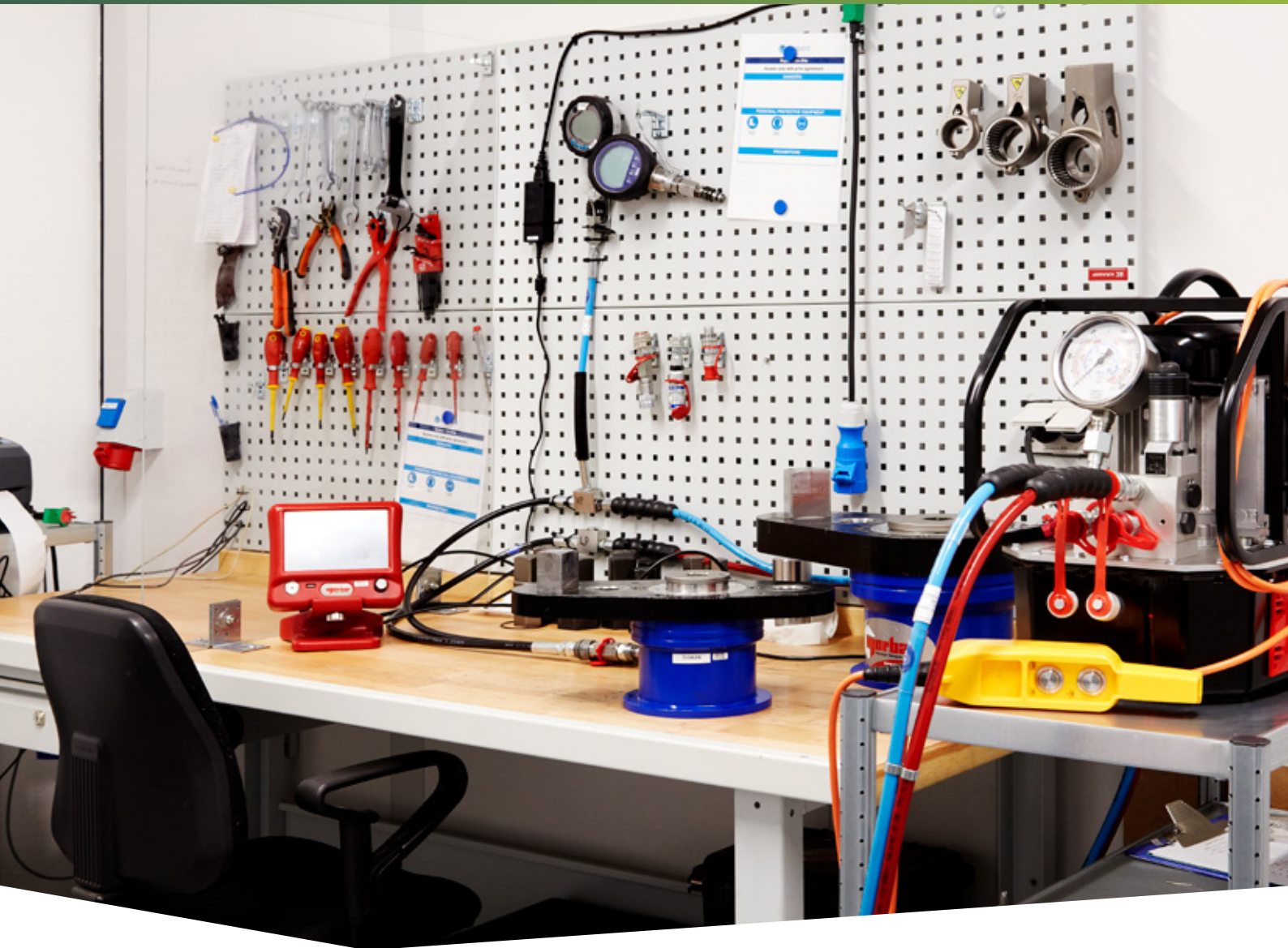
Our expertise lies in repairing, servicing, and troubleshooting of various components, including:

- ✓ Electric motors
- ✓ Electric chain details
- ✓ Pumps
- ✓ Generators
- ✓ Transformers
- ✓ Automatic lubrication systems

- Laser cutting
- CNC turning/milling
- Sheet metal fabrication
- Turn-key solutions

ISO 9001-2008  
EN1090-1:2009

ISO3834-2:2021  
Food grade approved



## TOOLS AND MEASURING INSTRUMENTS

# CERTIFICATION AND CALIBRATION

At Grene WIS, ensuring the precision and reliability of our equipment is the top priority. That's why we rely on accredited calibration and certification services to maintain the functionality and accuracy of our instruments.

### We offer calibration and certification of:

- ✓ Hydraulic tools
- ✓ Measuring instruments
- ✓ Measuring tools
- ✓ Torque wrenches
- ✓ Pressure gauges
- ✓ Insulated tools

In our pursuit of precision, Grene WIS has forged a robust partnership with Element Metech. Their reputation as a leading provider of accredited calibration and validation services aligns perfectly with our dedication to quality. They offer DANAK-accredited calibration, and they can support all types of instruments. They provide traceable and ISO/IEC 17025-accredited calibrations of measuring instruments.

With Grene WIS and Element Metech joining forces, our commitment to precision ensures that our clients receive the highest standards of reliability and accuracy in every instrument we deliver.

| WIND TURBINES | | FOUNDATIONS | |

# SUPPORTING THE CHANGE TO RENEWABLE ENERGY

## Your complete calibration solution to the wind industry Calibration & Metrology

We are Element Metech, a single point of contact for calibration of measuring instruments, for validation of production equipment, and for dimensional inspection

### Making tomorrow safer than today

We recognize the wider impact of what we do – on the people and communities that we serve. Every day, in one way or another, we support customers who really care about their products and services getting to market and ensuring they are safe, fit for purpose and compliant.



We are a global provider of **Testing, Inspection and Certification services** for a diverse range of materials and products in sectors where failure in service is not an option. Recognized as an industry leader by Sustainalytics, a global leader in ESG research and rating, we have the highest rating of any major TIC player.



**GLOBAL LEADER IN TESTING,  
INSPECTION AND CERTIFICATION**

[www.elementmetech.com](http://www.elementmetech.com)



REVOLUTIONIZING OPERATIONS

**WITH CUSTOMIZED CONTAINER SOLUTIONS**

We understand the dynamic needs of the energy sector, including the wind turbine industry, power plants, and biogas facilities. Our expertise lies in delivering complete container solutions, tailored to meet the unique demands of these industries.

In collaboration with leading green energy companies like Ørsted, Vestas, and Siemens Gamesa, we provide bespoke container solutions used globally. We supply all components for the task at hand, and subsequently, these containers are returned to Denmark for regular inspection and certification every six months.

When you order a container solution from Grene WIS, we begin by thoroughly analyzing your current requirements. Based on your specifications, we deliver a ready-packed workshop container, ensuring quick and efficient deployment.

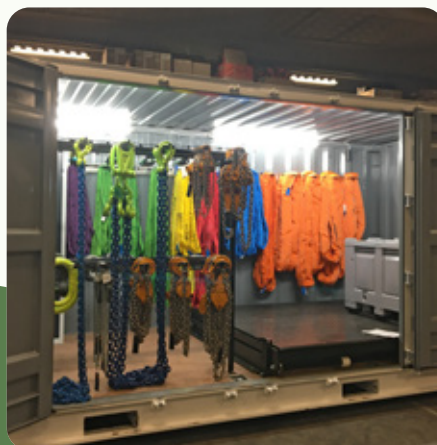
The container includes everything needed for installation or service jobs:

- ✔ Custom tools and equipment
- ✔ Hydraulic pumps and tools
- ✔ Spare parts
- ✔ Technical articles
- ✔ Calibrated instruments
- ✔ Lifting gear
- ✔ Corrosion protection

**THREE TYPES OF SPECIALIZED CONTAINERS**



**1. Tool containers**  
Equipped with all necessary tools for your specific tasks.



**2. Lifting gear containers**  
Designed to handle all your lifting requirements with ease.



**3. Customized containers**  
Tailored to your unique specifications, accommodating specific tools and equipment.





**REPAIR INSTEAD OF REPLACE - IT REDUCES COSTS  
AND BENEFITS OUR ENVIRONMENT**

## REPAIR LOOP

Since 2006, Grene WIS has repaired electrical motors, oil and water pumps, cranes, and central lubrication pumps for the wind turbine industry. Repairing and recycling wind turbine components can result in significant savings.

We have a repair loop where Grene can offer to repair, paint, and test components, so they are as good as new again.

**REHOBOT®**

POWER WITH HYDRAULICS

# SWEDISH-MADE HYDRAULICS SINCE 1924

### Almost 100 years of experience and expertise

Since 1924, we have developed unparalleled high-pressure hydraulic solutions for service and maintenance purposes that improve efficiency and reduce cost.

We offer hydraulic pumps within the pressure range 700 - 3000 bar.

[www.rehobot.se](http://www.rehobot.se)





### Tools that inspire

Stahlwille has offered uncompromising German quality since 1862, with a continuous emphasis on innovation and raising the bar for high-quality tools. The substantial focus on its market and customers has allowed Stahlwille to develop remarkable solutions. Despite its pioneering work, Stahlwille is still 'Made in Germany', producing most of its tools in Germa-

ny. Stahlwille is represented in over 90 countries worldwide, through subsidiaries or partners.

### Why Stahlwille?

Stahlwille has worked with wind turbine manufacturers and operators for decades, delivering tools, torques, and calibration. The global footprint in the wind industry has allowed Stahlwille to gain extensive knowledge in the field. Stahlwille's solutions provide you with everything you need both for tight spaces and high altitudes, and its tool control systems protect against tool loss. This makes its solutions optimal for everything related to wind power.

### Torque tools

Stahlwille is largely known for its torque tools, with a wide range of both mechanical and electromechanical torque wrenches. Stahlwille's torque tools offer remarkable precision, a reliable release, with no need to reset, and an ergonomic design. Additionally, Stahlwille offers a torque multiplier called Multipower MP300. This product allows for more effortless tightening and extends the range up to 5.000 N-m. Below is a table comparing selected Stahlwille's torque wrenches.

	730	721	714	766
Technology	Mechanical	Mechanical	Electromechanical	Electromechanical
Setting	Turning knob	Quick setting	Digital fine tuning	Digital
Mount	Mount for insert tools	Permanently installed ratchet	Mount for insert tools	Mount for insert tools
Deviation	3%	4%	2%	2%
N-m	2-1.000 N-m	160-1.000 N-m	1-1.000 N-m	1-1.000 N-m
Certificate	ISO6789-2 2017	ISO6789-2 2017	ISO6789-2 2017	ISO6789-2 2017
				Documentation via display

Stahlwille's calibration laboratory for torque tools is accredited by DAkks, following DIN EN ISO/IEC 17025:2005.



### PerfectControl

PerfectControl is Stahlwille's complete calibration system, allowing fast and easy calibration. The system allows for extremely precise calibrations, where a calibration certificate can be printed or saved to USB. PerfectControl is available in numerous languages.

# GLOBAL WIND PARTNERSHIP WITH GRENE

## SmartCheck

SmartCheck is a unique, flexible, and accurate tester for torque tools. The compact design, the rotatable display, mount, and base, and the option to be run on batteries make SmartCheck completely mobile. The mobility of SmartCheck does not compromise the quality. SmartCheck has three operating modes and three measuring units, measuring up to 1.500 N-m, with a  $\pm 1\%$  deviation, and a USB port that enables data to be exported.



## Other tools

Despite Stahlwille being well-known for its torque wrenches, Stahlwille also has a large range of other high-quality tools – spanners, screwdrivers, pliers, and impact tools, among others.



## Anders Gram

Global Head of Wind at STAHLWILLE Eduard Wille GmbH & Co. KG  
M: +45 23 23 63 58  
E: [ag@stahlwille.dk](mailto:ag@stahlwille.dk)

## Partnership

Stahlwille's Global Head of Wind, Anders Gram, has the following to say about the partnership:

*"We really value our global partnership with Grene WIS. They have a strong footprint in the wind industry, adding value to the global supply chain."*

Supplemented by the Technical Sales Manager, Nikolaj Rosenvinge, the impact of the partnership between Stahlwille and Grene is recognized:

*"Grene is one of our most competent business partners with many years of experience with solutions and supply for the wind industry. We are pleased to supplement them with technical assistance and support – together helping customers in the global wind market. Grene's sense of quality, solutions, and systems go hand in hand with our values and strategies."*



## Nikolaj Rosenvinge

Technical Sales Manager  
M: +45 40 30 73 81  
E: [nir@stahlwille.dk](mailto:nir@stahlwille.dk)

Instagram:



LinkedIn:



Facebook:



Website:



## MEASURING EQUIPMENT

At Grene WIS, precision is paramount. Our array of high-quality measuring equipment, from distance meters to pressure gauges, is designed to deliver accurate and reliable results. Partnering with leading brands like Stahlwille and Bosch, we ensure your measurements are always spot on.



# A SPECTRUM OF QUALITY PRODUCTS

## HAND TOOLS

Our selection of hand tools is a testament to our commitment to quality. Offering everything from wrenches to screwdrivers, our range includes top-tier brands such as Milwaukee and KNIPEX, ensuring durability, safety, and comfort in every use.



**Green Pin® shackles and lifting components for the wind industry.**

Industrieweg 6 | 3361HJ Sliedrecht | The Netherlands  
sales@greenpin.com | +31 184 41 33 00 | greenpin.com





## CORROSION PROTECTION

Understanding the importance of longevity, our SUVO Non Nafta series provides eco-friendly rust protection, especially crucial for wind turbine components. Developed in collaboration with the wind turbine industry, this series is trusted by leading OEMs for its effectiveness and sustainability.



## HYDRAULIC TOOLS AND PUMPS

Our expertise in hydraulic tools is unmatched. With a range that includes hand pumps, cylinders, and torque wrenches, we provide robust and reliable solutions. Our own tensioner pumps are widely acclaimed in the wind turbine industry, reflecting our commitment to innovation and quality.



## LIFTING GEAR AND PERSONAL SAFETY

We are experts in lifting equipment, offering a diverse range that includes everything from lifting claws to safety equipment. In partnership with NOS A/S, we provide specialized lifting solutions, ensuring the highest safety standards for the wind turbine, construction, and marine industries.



## CUSTOM PRODUCTS

We excel in creating special products tailored to your needs, from cable sets to cooling pumps and work platforms. Our ability to design and manufacture custom solutions, complete with full documentation, sets us apart as your go-to partner for specialized requirements.



**Environmentally friendly  
corrosion protection  
for the green energy sector**

SUVO Non Nafta  
- Corrosion protection for the wind turbine industry

View more: [grenewis.com](http://grenewis.com)

NOS A/S

## ELEVATING STANDARDS IN LIFTING AND SPECIAL EQUIPMENT

Founded in 2009, NOS A/S has rapidly ascended to a prominent position in the onshore and offshore lifting and specialty equipment industry. With its headquarters now in Hatting, the company thrives under the umbrella of Grene WIS, supported by CoreCapital.



NOS A/S offers an extensive product line catering to the wind, marine, oil, building, and construction industries. This range includes:

- ✓ Steel wire ropes and accessories
- ✓ Lifting chains and accessories (Grade 8 & 10)
- ✓ Shackles and turnbuckles
- ✓ Eye bolts and swivels
- ✓ Fiber ropes and accessories
- ✓ Webbing slings, round slings, and web lashings
- ✓ Chain hoists, winches, lifting clamps, and magnets
- ✓ Hydraulic jacks and accessories
- ✓ Pallet forks and lifting yokes
- ✓ Fall protection equipment
- ✓ Load cells and water bags
- ✓ Anchors, anchor chains, and accessories
- ✓ Subsea cable-laying equipment
- ✓ Safety and protection tapes
- ✓ Anodes in zinc and aluminum

Elpress verified solutions for the green transition

**ELPRESS**



## SERVICE AND INSPECTION

### A commitment to safety and efficiency

NOS A/S prides itself on providing mandatory service and annual inspections for cranes, lifting gear, and other equipment. Their proactive approach ensures compliance with legislation and enhances safety and operational efficiency. The company's service technicians are well-versed in current laws and requirements, offering guidance in the crane and lifting area.

### 24/7 service and convenient rental options

Offering round-the-clock service, NOS A/S is always ready to assist with on-site issues. Additionally, they provide storage and maintenance services at their premises in Hatting, Jutland. For those dealing with short-term or long-term projects, NOS A/S offers a broad selection of rental products, ensuring that all equipment is serviced and inspected before delivery.

### In-house expertise

With their own rigging workshop, NOS A/S specializes in hand splicing of wire and fiber ropes and casting for all types of wire ropes and sockets, showcasing their capability to tailor solutions to specific needs.



## QUALITY-CONSCIOUS MACHINE FACTORY

Ålsrode Smede- & Maskinfabrik delivers a reliable and precise end product thanks to professional advice and working together with customers. We are a subcontractor to e.g. the food industry, the construction and civil engineering industry, the offshore industry, the wind turbine industry, the energy and transport industry and outdoor industries.





**MPASIA**  
A GRENE WIS COMPANY



---

**MPASIA - A GRENE WIS COMPANY**

## **CUSTOM TARPAULINS FOR THE WIND INDUSTRY**

MPASIA, a Danish-owned and managed company, has established itself as a world-leading supplier of high-quality tarpaulins for industries like wind and transportation. With production in China, including the development of the world's largest tarpaulin factory

for the wind turbine industry, MPASIA excels in creating customer-specific tarpaulin solutions. Their strong design department and extensive testing facilities ensure that each product meets precise customer needs.



## As a Distributor of SKF

– Grene WIS is your access point to SKF's global product inventories and knowledge within, among other things:

- Bearings
- Mounting/dismounting tools
- Lubrication
- Seals
- Condition Monitoring

**Would you like to know more?**

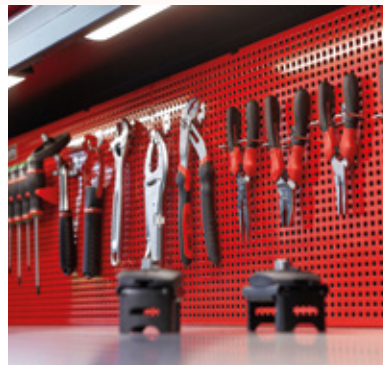
Read more at: [www.skf.com](http://www.skf.com)

**SKF**®



**DEWALT**

Accelerate productivity with powerful tools and connected solutions designed to deliver efficiency and profitability. DEWALT® provides a wide range of offerings for a variety of construction and maintenance workflows.



**FACOM**

Create an organised and functional work environment that is also easy and comfortable to use with FACOM Storage, while using our high quality tools.

# TOGETHER FOR A GREENER WORLD

At Grene Wind Industry Supplies A/S, our passion for a greener world drives us to actively engage in environmental protection. We focus on reducing our climate footprint and optimizing energy efficiency. Our commitment extends to minimizing resource costs, including energy, water, and packaging. We actively reuse

packaging and pallets, showcasing our dedication to being an environmentally and cost-conscious enterprise. Our green profile is not just a part of our operations; it's embedded in our corporate identity. We take pride in our contribution to environmental protection and in leading the way towards a more sustainable future.



## SOCIAL RESPONSIBILITY AND INCLUSION

Our commitment to social sustainability is evident in our efforts to support and integrate society's most vulnerable into the labor market. We strive to develop their personal and professional skills, enhancing their opportunities. Embracing diversity, we foster an inclusive work culture that values different backgrounds, perspectives, and experiences.



## ETHICAL AND FINANCIAL SUSTAINABILITY

Grene WIS prioritizes ethical supply chain practices, ensuring our suppliers align with our values and principles. We are also committed to transparently reporting our CO2 emissions and sustainable performance to stakeholders and society.



## ENERGY-OPTIMIZATION INITIATIVES

We are going green, and that is why we have invested in both sustainable energy and energy optimization. We have invested in 730 m2 of solar cells and 8 heat pumps to reduce environmental impact and save on energy costs. We are self-sufficient in energy and cover our total (global) energy consumption across all our departments worldwide.

# INVESTMENTS IN GREEN ENERGY

Our journey to becoming greener includes significant investments in sustainable energy and energy optimization



## Charging stations

Installation of additional charging stations for electric cars in 2024, accessible to the public.



## Solar Energy

We have invested in 730 m2 of solar cells and 8 heat pumps, reducing our environmental impact and energy costs.



## Energy self-sufficiency

We have achieved self-sufficiency in energy, covering out total global energy consumption across all departments.

## Elevate Your Wind Turbine Safety with Tractel's Expertise!

Your Safety, Our Expertise: Tractel, a worldwide safety leader, brings you reliable, innovative, and cost-effective working-at-height solutions.

Tailored for Wind Turbines: Our complete range covers it all - from blade maintenance platforms to climb assists, material handling hoists, and fall protection gear and equipment. Your safety, our priority!

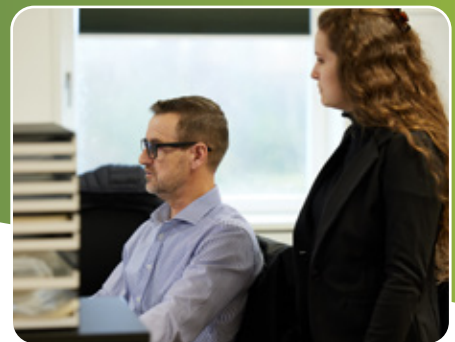
Ready for Any Situation: Evacuation or rescue, Tractel has you covered with advanced devices that ensure your peace of mind.

Alimak Group Affiliation: Tractel is proud to be a part of the Alimak Group, a global provider of sustainable premium height solutions. With a presence in over 120 countries, the Alimak Group pioneers vertical access and working at height solutions that enhance safety, productivity, and cost efficiency. This affiliation amplifies our commitment to elevating your safety to new heights.

Take the leap towards safer heights with Tractel's complete range.

Contact us at [sales.benelux.tractel@alimakgroup.com](mailto:sales.benelux.tractel@alimakgroup.com) or visit our website via [www.tractel.com](http://www.tractel.com).





CONTACT US ON +45 86 44 20 55



Tinvej 2 · DK-8940 Randers SV · Denmark · wis.dk@grene.com